

# B&C Patti Classic /women - TW 262

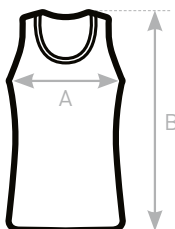
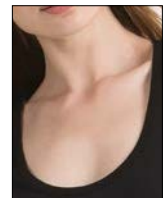


**MEDIUM FIT**

- Tank Top
- Wide crew neck collar with double topstitching in self fabric
- Self fabric piping at armholes with double topstitching
- Bottom hem with double topstitching
- Trendy front & back yokes
- Side seams



- 100% pre-shrunk ring-spun combed cotton
- Single Jersey
- 120 g/m<sup>2</sup>
- XS - S - M - L - XL
- 5 pcs/pack & 25 pcs/carton



**SIZES [CM]**

	XS	S	M	L	XL	XXL	XXXL
<b>B&amp;C PATTI CLASSIC /W. TW 262</b>							
<b>B&amp;C PATTI SLUB /W. TW 034</b>							
A HALF CHEST	36	39	42	45	48	-	-
B BODY LENGTH	65,5	66,6	67,7	68,8	70,6	-	-

